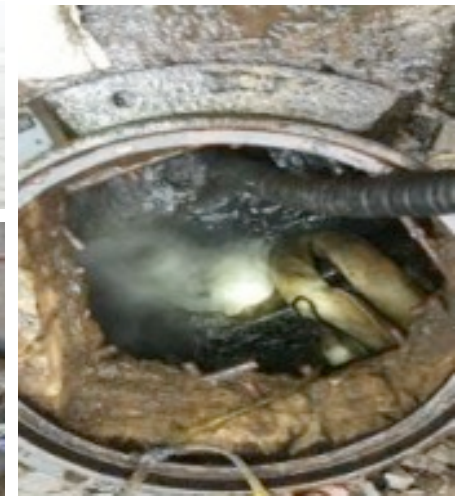
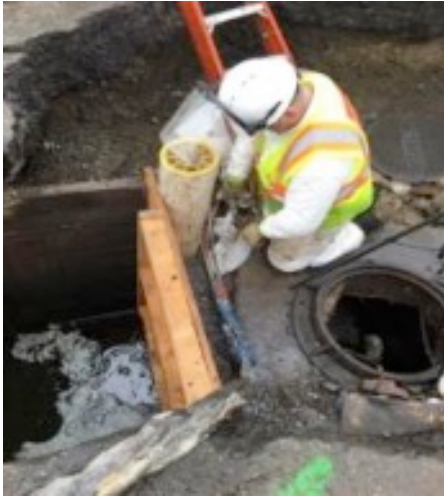


BP Oil - Box Seal & Abandonment

Port Newark, NJ



Project Challenges	Solution	Support	Outcome
<ul style="list-style-type: none"> Storm Water Junction Box seal from oil inflow & infiltration. 12" pipe to be abandoned. Tidal Waters needed to be pumped out of manhole during work. Containment dam needed to be installed on one side of manhole to contain material. 	<ul style="list-style-type: none"> Augmented Safety Plan needed to be site specific due to hazardous conditions. Injection points spaced at predetermined intervals and specified depths. Manhole sealed and pipe abandoned. 	<ul style="list-style-type: none"> PANYN BP Oil – Port Newark, N Stantec Consulting Services Pre- Con meeting with Consulting Engineer, Vacuum Truck contractor, and Safety Officer 	<ul style="list-style-type: none"> No downtime: All work performed in less than one day. No Service disruption: Storm Water Drain operated during install. Result: Pipe was abandoned and the Junction Box was sealed from oil inflow and infiltration.