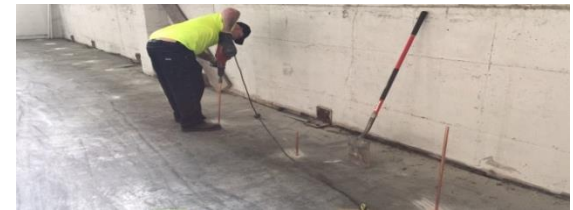
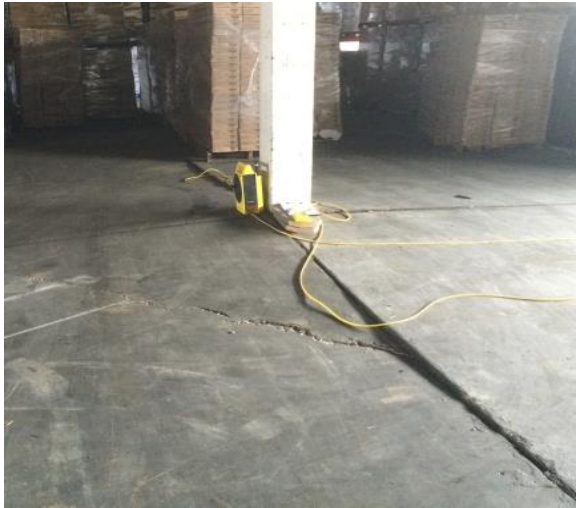


Warehouse Slab Stabilization Queens, NY



Project Challenges	Solution	Support	Outcome
<ul style="list-style-type: none"> Settled slab – on –grade in several areas of a warehouse. Unstable soil along a 260LF section of perimeter wall and around an interior pile cap. Work was not to disturb regular course of business. 	<ul style="list-style-type: none"> Injection points spaced at predetermined intervals and specified depths. Void fill and undersealing of slab to prevent further slab failure. Soil stabilized to -4' to prevent further slab settlement. 	<ul style="list-style-type: none"> Pre con with Kwest A/E engineering. Formosa Warehouse Inc. Pre Bid with Mack Industrial Realty Co., LLC 	<ul style="list-style-type: none"> No downtime: All work performed in less than one day. No Service disruption: Formosa Warehouse remained operational during install. Result: Soil is stabilized and slab is able to continue to handle the warehouse loads without failure.