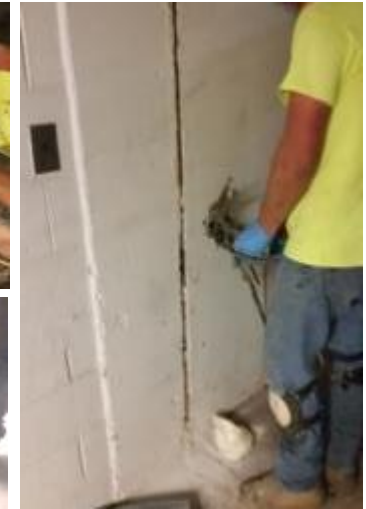
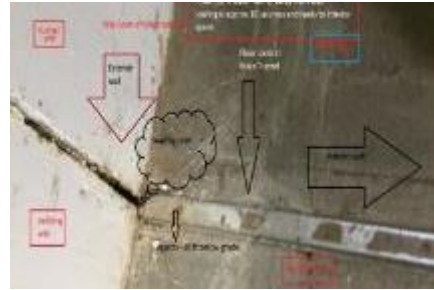


Hospital Tunnel Water Seal

Elizabeth, NJ



| Project Challenges | Solution | Support | Outcome |
|--|--|---|---|
| <ul style="list-style-type: none"> Subsurface groundwater infiltrating into one pedestrian tunnel and one utility tunnel connecting the hospital towers. The hospital must remain operational for patient care with no downtime of utilities and access. | <ul style="list-style-type: none"> Injecting along the circumference into the failed joint to seal it and restrict groundwater movement into both tunnels. Injections were made at 4' O.C. linear grid pattern. Laser levels insured no topside sidewalk lift. | <ul style="list-style-type: none"> Maser Consulting Facilities Manager and hospital administration offered full access. Pre-construction meeting On-site installation | <ul style="list-style-type: none"> Minimal impact: Work performed with no interruption of hospital operations. Quick Installation: Project was completed in one day. Result: Tunnel remained dry throughout subsequent heavy rains. |