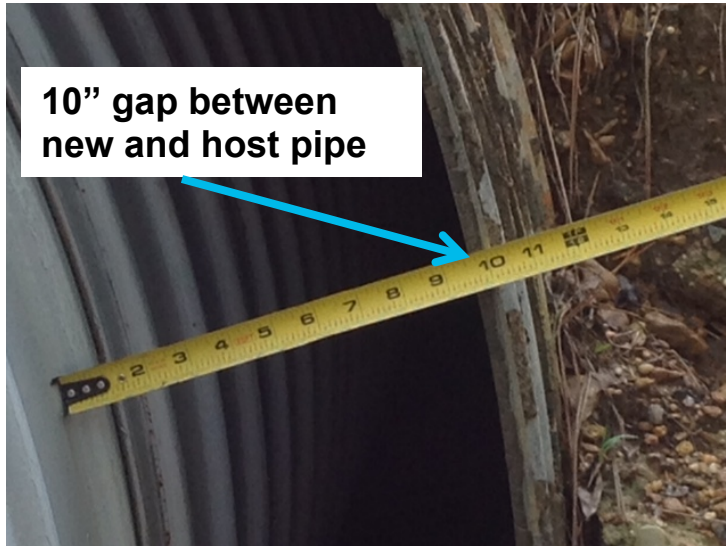


SR 583 Mississippi DOT – Slipline

Lincoln County, MS



| Project Challenges | Solution | Support | Outcome |
|--|--|---|--|
| <ul style="list-style-type: none"> Fill annular space of 120" corrugated metal host pipe being sliplined with new 96" corrugated metal pipe | <ul style="list-style-type: none"> Inject polyurethane into the annular space to fill void. Controlled expansion of polymer enables predictable and calculated injection | <ul style="list-style-type: none"> Customer placed the sliplined pipe and provided traffic control Ground Works' crews provided polyurethane injection in monolithic shoot that is at 90% strength in 15 minutes. | <ul style="list-style-type: none"> One injection / no lifts required despite heavy rainfall during injection (URETEK's patented hydro-insensitive formula displaces water during expansion) Actual injection time under 45 minutes Structural bond to host and new pipe |