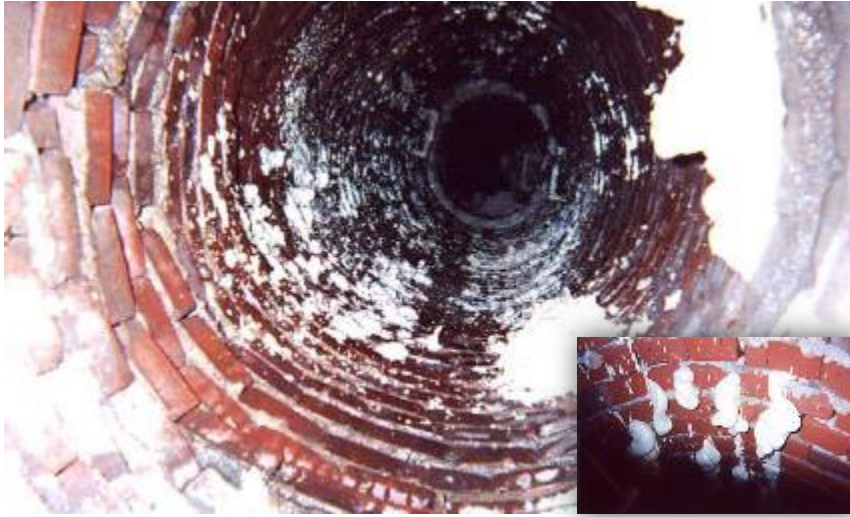


# Manhole B-8, Neyland Drive Knoxville, TN



Project Challenges	Solution	Support	Outcome
<ul style="list-style-type: none"> <li>• Sheared 8" lateral line was causing extensive voids and loose soil around manhole</li> <li>• 25' Manhole was under threat of collapse</li> <li>• Stabilize manhole without collapsing</li> </ul>	<ul style="list-style-type: none"> <li>• Inject around the perimeter of manhole and stabilize loose soils and the manhole, utilizing strict penetrometer measurement</li> <li>• Fill 75' of 8" line</li> </ul>	<ul style="list-style-type: none"> <li>• Specifications</li> <li>• Designed injection port quantity and depth</li> <li>• Pre-construction meeting</li> <li>• On-site installation</li> </ul>	<ul style="list-style-type: none"> <li>• <b>Minimal downtime:</b> All work performed in one day</li> <li>• <b>Stabilized soil:</b> Stabilized brick manhole and avoided roadway settlement. Additionally sealed the perimeter from further water intrusion.</li> </ul>