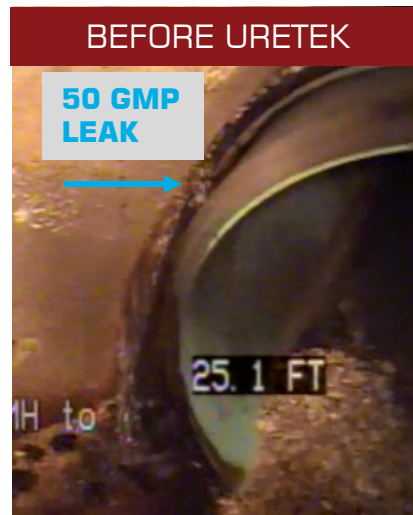


1/ Sealing – 27' Manhole Shorewood, IL



Project Challenges	Solution	Support	Outcome
<ul style="list-style-type: none"> • 27 foot deep by 4 foot diameter sanitary sewer manhole. • Groundwater infiltration in excess of 50 gpm was entering the manhole around outside of the 32 inch inlet pipe at the faulty joint. 	<ul style="list-style-type: none"> • GWS crews entered manhole to prepare the seal. Working safely to produce high quality results is always the highest priority. • Polyurethane was injected from inside manhole directly at the faulty joint and around the exterior of the pipe to eliminate all groundwater inflow. 	<ul style="list-style-type: none"> • Shorewood DPW assisted by providing a pre-construction video of leaking joint. • Shorewood also assisted by providing traffic maintenance. 	<ul style="list-style-type: none"> • Minimal intrusion: No excavation was involved with sealing this infiltration leak. • Infiltration Sealed: The leaking joint was completely sealed using lightweight, structural-grade polyurethane via the URETEK Method®