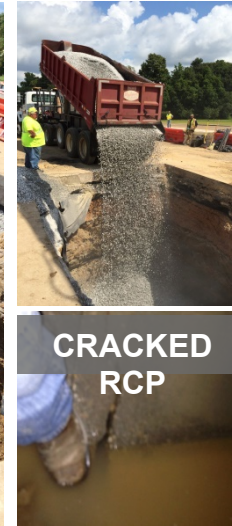


Hwy 61 – Emergency Sinkhole Repair

Natchez, MS



Project Challenges	Solution	Support	Outcome
<ul style="list-style-type: none"> Sinkhole formed on HWY61 in Natchez, MS 24" RCP misaligned due to a leaky joint that degraded the support soils and caused voids beneath the pipe The RCP shifted and caused a sinkhole that shut down a portion of the highway route to a nearby hospital 	<ul style="list-style-type: none"> Mechanically align the pipe utilizing a trackhoe Stabilize and seal the pipe utilizing URETEK's Deep Injection method Fill excavated area with #57 stone aggregate and stabilize the aggregate at every 4-5ft of fill 	<ul style="list-style-type: none"> Specifications Utility locates Pre-construction meeting MDOT construction support Emergency Response 	<ul style="list-style-type: none"> Sealed and rehabilitated stormwater drainage system Stabilized support soils: bound #57 aggregate to form a solid monolithic mass below highway Quick Installation: Project was completed over 2 Days