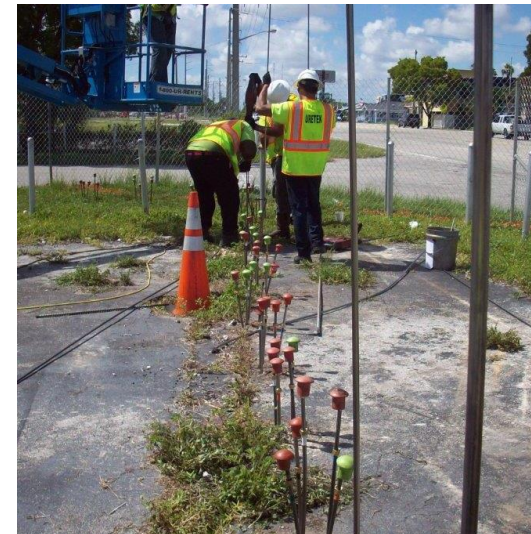


# FDOT SR7 Injectable Barrier™ Hollywood, FL



| Project Challenges  | Solution  | Support  | Outcome  |
|---|---|--|--|
| <ul style="list-style-type: none"> <li>Subsurface contamination hotspot that had potential for migration into groundwater tables along SR7 Highway</li> </ul> | <ul style="list-style-type: none"> <li>Injectable barrier™ that consisted of 1,080 Injections at 216 points to restrict groundwater movement to the construction site</li> <li>Injections were made at 8, 11, 14, 17 and 20 feet below land surface in a 3ft horizontal grid pattern</li> </ul> | <ul style="list-style-type: none"> <li>Specifications</li> <li>Designed injection port quantity and depth</li> <li>Pre-construction meeting</li> <li>On-site installation</li> </ul> | <ul style="list-style-type: none"> <li><b>Minimal impact:</b> Work performed within time frame</li> <li><b>Quick Installation:</b> Project was completed over 3 Weeks</li> </ul> |