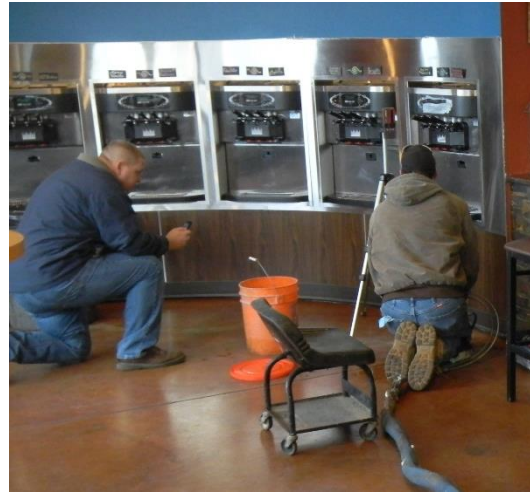


Coby's & Starbucks Rehabilitation

Kelso, WA



Project Challenges	Solution	Support	Outcome
<ul style="list-style-type: none"> • 1,500 square feet of the Coby's Frozen Yogurt and Starbucks adjoining concrete slabs had settled up to 4" • Associated footing settlement had occurred between pin piles • Infiltration and inflow of backfill into a failed 12" CMP storm line was causing the settlement • Mudjacking had been attempted 12 months prior without success 	<ul style="list-style-type: none"> • Implement URETEK's patented Deep Injection® process between existing pin piles to stabilize the perimeter footing • Lift the settled slabs using lightweight, structural-grade geo-polymer via the URETEK Method® • Grout and abandon the failed 12" CMP storm line 	<ul style="list-style-type: none"> • URETEK was involved with the pre-construction design process to develop injection plans, specs, and engineer's estimates • Assisted with permitting through the City of Kelso • Coordinated installation with both Coby's and Starbucks managers to reduce/eliminate disruption to business activity 	<ul style="list-style-type: none"> • Fast Process: The project was completed in 1.5 days • Minimal Disruption: Both the Starbucks shop and drive-thru remained open during install • Permanent Solution: Stabilization of the perimeter footing and grouting of the existing storm line provided a permanent solution in combination with slab lifting