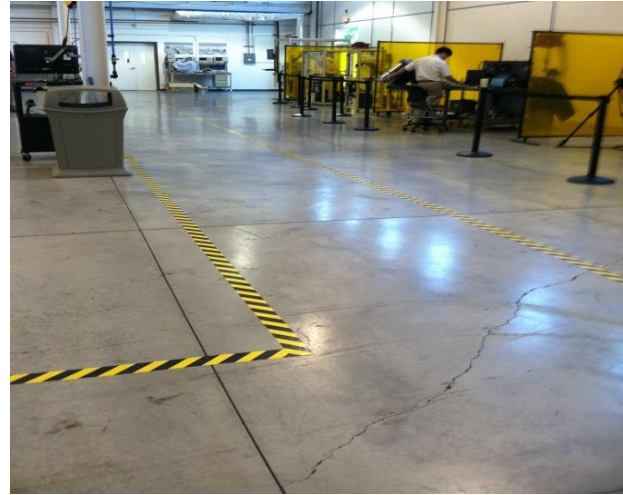


Buffalo Innovation Center

Buffalo, NY



| Project Challenges | Solution | Support | Outcome |
|---|--|--|--|
| <ul style="list-style-type: none"> • New building was built over old building 's basement without proper fill material • Floor was cracking with tow motor movement • Certain cracks on the floor were in a circular pattern indicative of voids | <ul style="list-style-type: none"> • Method applied to entire room floor for stabilization • Deep injections were added in areas that would be loaded with heavier equipment | <ul style="list-style-type: none"> • Hired GPRS for utility location prior to injection | <ul style="list-style-type: none"> • Work completed in 3 days • Stabilized and lifted concrete floor a little over 1" to allow for load transfer between panels • Depth injections were placed in specific areas determined by client to allow for heavier equipment loads |